

# Base Náutica Santa Susana



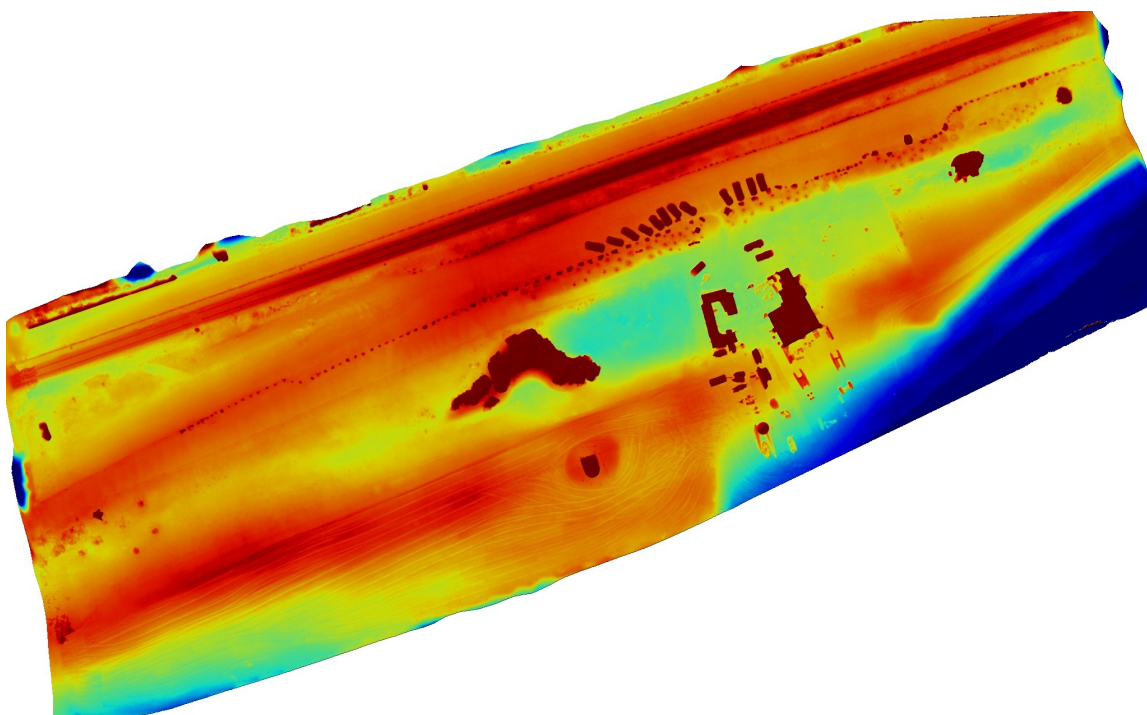
## Resumen de detalles del mapa

Project Name	Base Náutica Santa Susana
Photogrammetry Engine	Fiovodrone
Date Of Capture	Sep 10, 2022
Date Processed	Sep 10, 2022
GSD Orthomosaic (GSD DEM)	1.04cm/px (DEM 4.15cm/px)
Area Bounds (Coverage)	34451.72m <sup>2</sup> (81%)
Image Sensors	DJI - FC2103
Average GPS Trust	10.00m

## Resumen de calidad y precisión

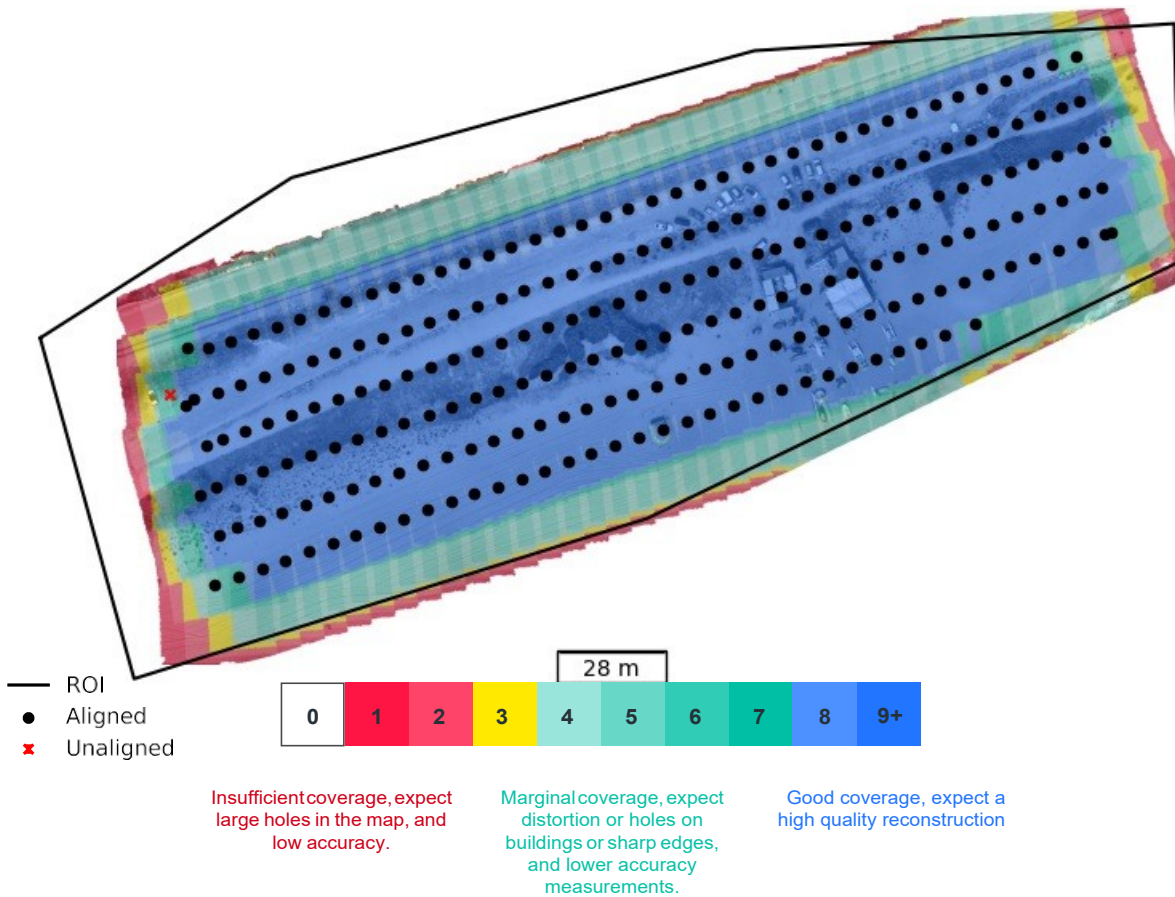
Image Quality	High texture images
Median Shutter Speed	1/1250
Images Uploaded (Aligned %)	233 (100%)
Camera Optimization	0.04% variation from reference intrinsics

# Muestra



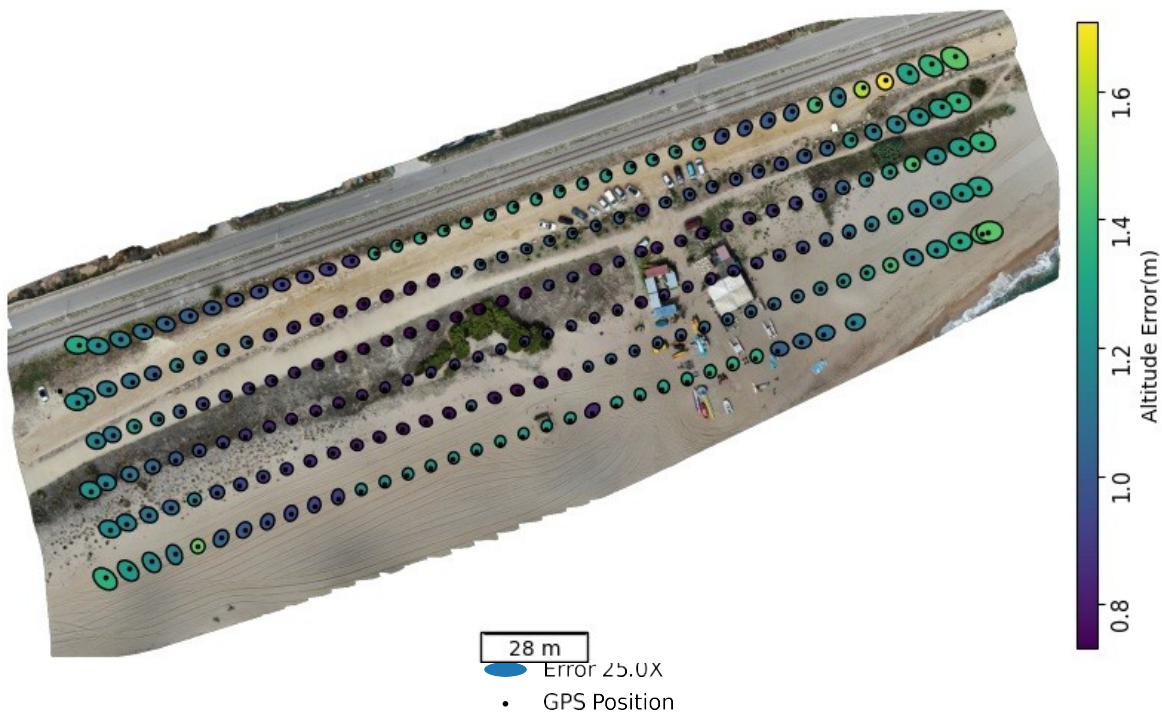
# Revisión de la calidad del conjunto de datos

## Cobertura fotografías Ortomosaico



Sensor(s) Used	DJI - FC2103
Image Count (by sensor)	233
Image Resolution	4056x3040 (~12MP)
Orthomosaic coverage (% of area of interest)	81.27
Average Orthomosaic Image Density within Structured Area	10 images/pixel
Median Shutter Speed	1/1250

# Estructura del levantamiento



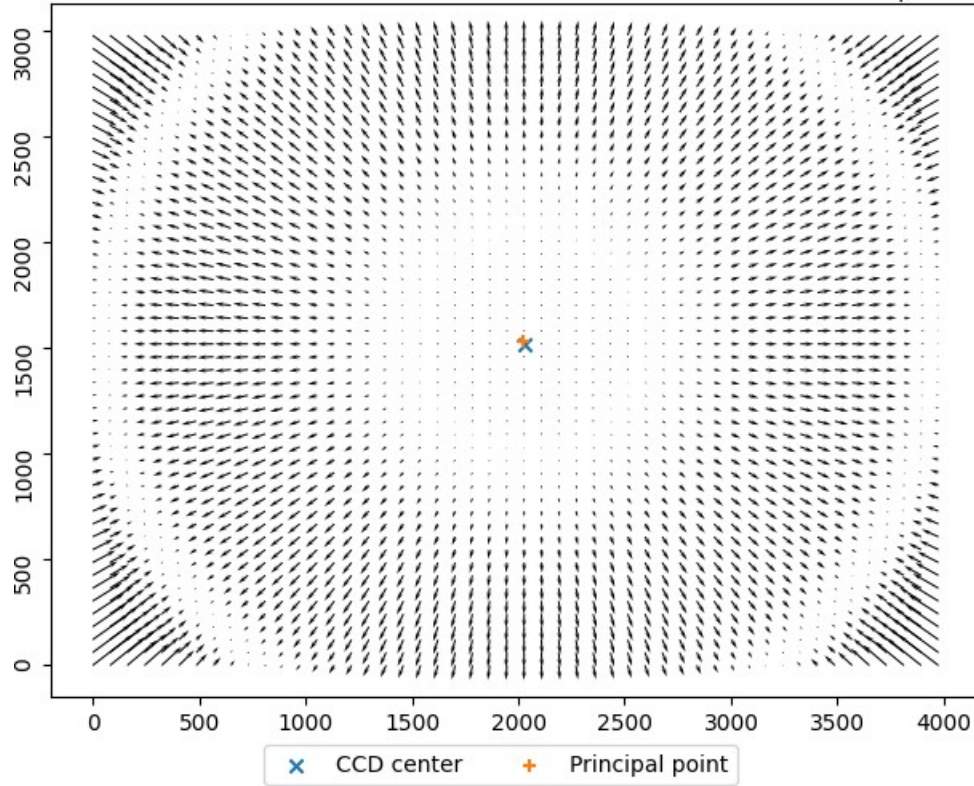
Aligned Cameras	100% 232/233
RMSE of Camera GPS Location	X 0.02m Y 0.01m Z 0.03m RMSE 0.06m

# Calibración de la cámara

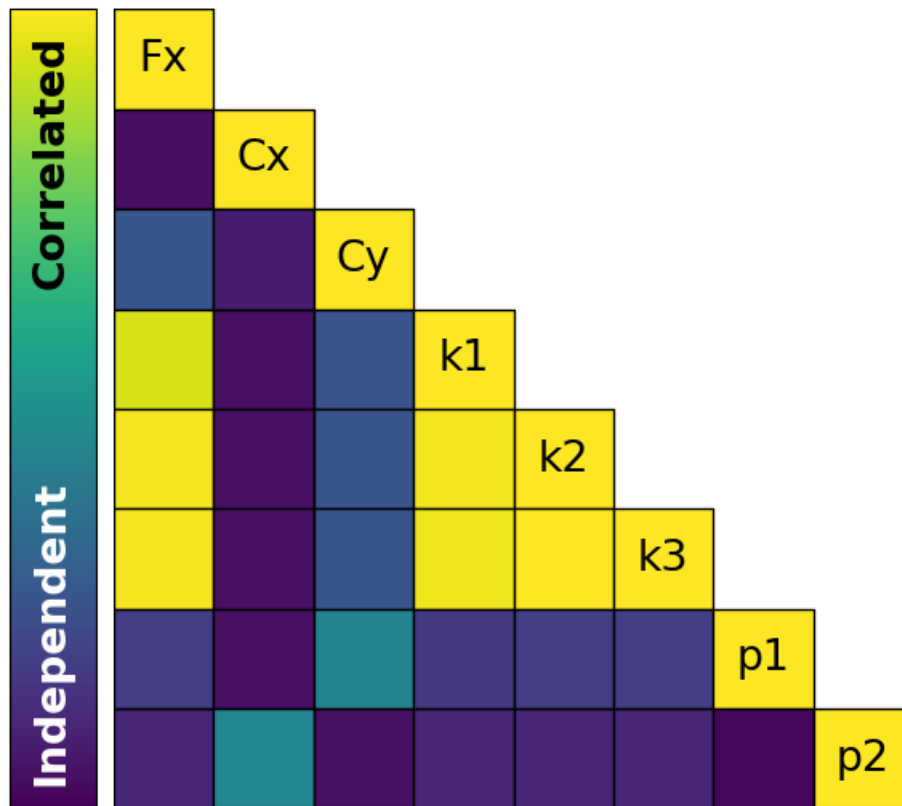
Camera Optimization	0.04% variation from reference intrinsics
---------------------	---

DJI - FC2103 - Distortion Map

· 1 pixel



	Fx	Cx	Cy	k1	k2	k3	p1	p2
Value	2844.7	2024.7	1532.23	0.146573	-0.435334	0.262907	-1.04994e-05	-0.000580248
Error	2.10855	0.101882	0.0857788	0.934559	5.30377	4.79583	0.0157162	0.0191546



## Densificación y Mallado

Processing Mode Quality	High
Nadir Images	100% Include oblique or horizontal images to improve reconstructions of man-made structures.
Oblique images	0%
Horizontal images	0%
Total Points	6.7 million
Point Cloud Density	238.84 points/m <sup>2</sup>
Mesh Triangles	1.1 million

# Modelo de elevación digital

Mode	Generated from Mesh
DEM GSD	DEM 4.15cm/px
Relative/Absolute	Relative Altitude vs Drone takeoff

